

# AINSWORTH

2018

## ONE & SIX YEAR STREET PLAN

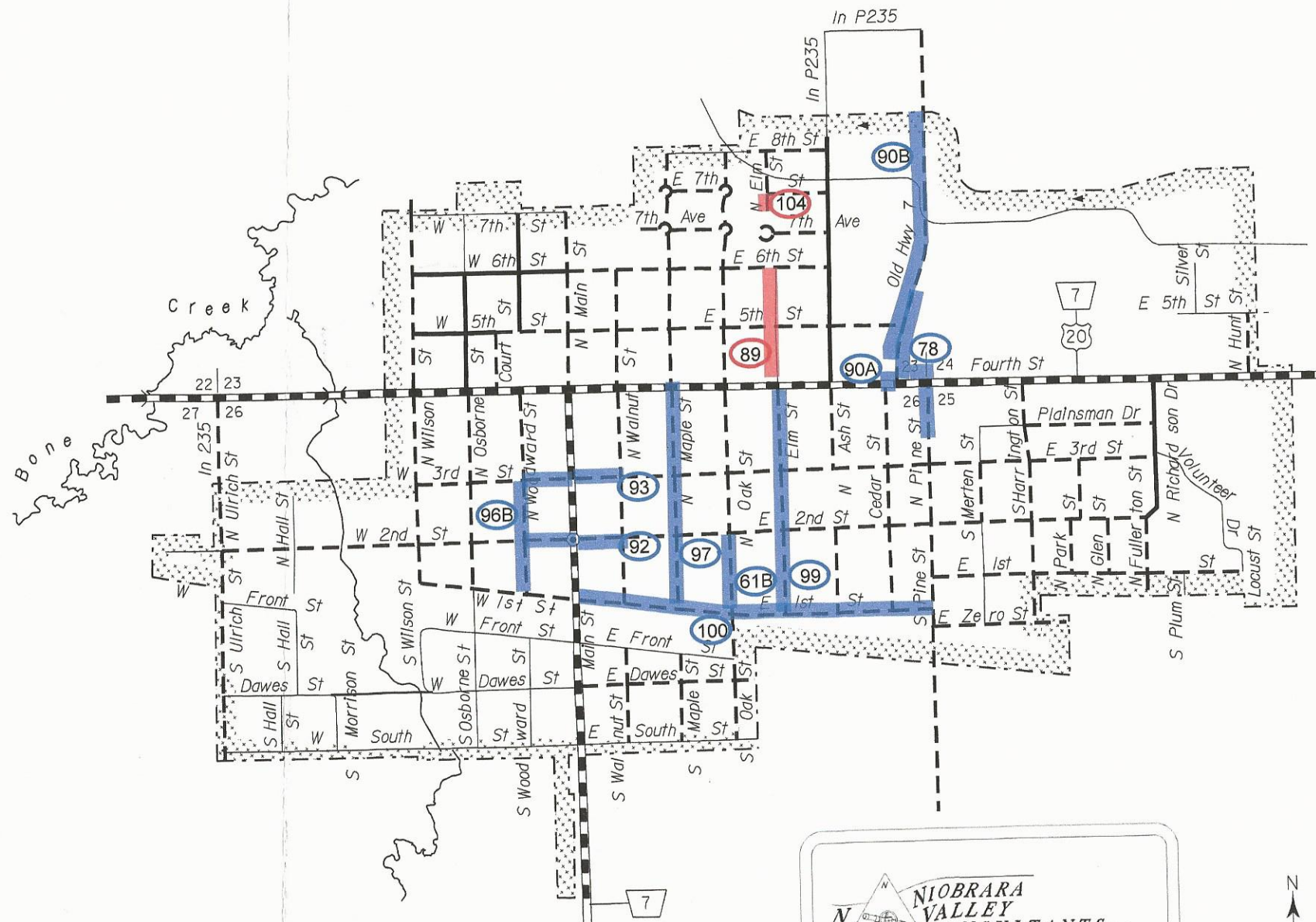
ONE YEAR █  
SIX YEAR █

### ONE YEAR

- 89 - N Elm St from 4th to 6th - asphalt millings
- 104 - N Elm St from 7th to dead end - asphalt millings

### SIX YEAR

- 61B - Oak st from 1st to 2nd - concrete-C/G
- 90 A - Old Hwy 7/Hwy 20 rebuild intersection
- 92 - E 2nd/W 2nd from Woodward to Walnut - asphalt overlay
- 93 - E 3rd/W 3rd from Woodward to Walnut - asphalt overlay
- 97 - Maple from 1st to 4th - remove asph-place conc-C/G
- 99 - Elm from 1st to 4th - place conc-C/G
- 100 - E 1st from Main to Pine - San sewer-conc-C/G
- 90 B - Hwy 7 from 20 to N limit - remove/replace - asph/conc
- 96B - Woodward from 1st to 3rd - San sewer-C/G-conc
- 78 - Hwy 7/ N Pine-42" X 500' CMP/ditch drainage



**NIORRARA VALLEY CONSULTANTS LLC**

108 W 4th St  
PO Box 50  
Valentine, NE 69201  
402-376-2691 phone  
402-376-2692 fax  
nvcllc95@gmail.com

N  
↑  
O  
↓  
AINSWORTH